

# MC561 Color MFP

**OKI**<sup>®</sup>  
PRINTING SOLUTIONS



All-in-one functionality. HD Color output. Superior speed and media flexibility. And eco-friendly, too.



## OKI Printing Solutions and The Environment

- ENERGY STAR<sup>®</sup> Compliant** Superior energy efficiency
- Duplex (2-sided) Printing** Saves energy and resources
- Multifunctionality** One device takes the place of many
- Toner Save Mode** Reduces amount of consumables used
- Deep Sleep Mode** Automatically reduces power to <1.5W
- Automatic ECO Mode** Reduces power to save energy
- 1-Piece Image Drum** Reduced use of disposable material





## The MC561 Color MFP enhances small-to-medium workgroup productivity with robust print/copy/scan/fax functionality.

### MC561 Color MFP Highlights:

- Print and copy at speeds up to 27 ppm in color, 31 ppm in black & white<sup>1</sup>
- HD Color printing technology for outstanding print and copy quality
- Multi-tasking functionality standard, enabling two tasks to be performed at once
- Duty cycle of up to 60,000 pages per month
- 3.5" backlit, tilting LCD display, 1-touch keys, alphanumeric keypad, and QWERTY keyboard
- PCL® and PostScript® 3™ emulations
- Duplex (2-sided) printing/copying, standard
- Full-featured fax with dual access functionality and 4 MB fax memory<sup>2</sup>
- Multiple scan-to locations: PC, network, FTP, e-mail or USB memory stick
- Print from USB memory stick
- 50-sheet reversing automatic document feeder (RADF), standard – saves time and energy
- Banner printing capability on sheets up to 52" in length<sup>3</sup>
- Color Access Policy Manager controls printing costs by defining usage rules
- Optional 16 GB SD Card memory storage
- Separate CMYK toner cartridges for lower cost of operation
- Compact design to fit the smallest environment
- ENERGY STAR® compliant
- 1-Year Overnight Exchange limited warranty<sup>4</sup>
- Live, toll-free technical support, 24/7/365<sup>5</sup>

**The MC561 Color MFP from OKI Printing Solutions** combines high-quality color and four-in-one functionality with speed, reliability and ease of use—superior value from a desktop device that has a footprint small enough to fit easily into your environment. It's the perfect solution for the small-to medium-size workgroups in your company.

**Enhance the productivity of your staff** – The MC561 Color MFP is fast: it prints or copies up to 27 color pages or 31 black & white pages per minute, with the first color page printing in just 8 seconds.<sup>1</sup> It delivers color duplex prints or copies at the rate of 14 ppm, black & white at 16 ppm. Its reversing automatic document feeder (RADF) quickly scans both sides of a document, and its multi-tasking capabilities let you set up or perform two tasks at the same time.

And, with a duty cycle of up to 60,000 pages per month, this durable device can be relied upon to handle large daily print and copy volumes.

**Scan at the machine or from your desk** – With the MC561 Color MFP, you can turn hard-copy documents into electronic files by placing them in the RADF or directly onto the flatbed scanner, scan them in black & white or color, and send the scan to a locally attached PC, to the shared directory on the network (without the need for additional software), to an e-mail address or to an FTP site. You can also remotely preview and scan your documents on your PC via the network connection and TWAIN driver. You can insert a USB memory stick into the port conveniently located on the front

of the unit and save scans to or print files directly from the stick. With Direct Print, you can even print PDF files without opening an application.

The MC561 MFP prints and copies in HD Color, an OKI® exclusive: multi-level printheads and microfine toner provide more detail, greater color depth and reduced grain, for breathtaking output even on ordinary office paper.

**It can make your job easier** – The MC561 Color MFP is really user friendly. It's network-ready right out of the box and has an intuitive operator panel that's simple to use, with a 3.5" backlit LCD display that tilts up for easy reading, 1-touch keys for fast dialing, and a full QWERTY keyboard.

It comes with a 4 GB SD card for file storage, which can be upgraded to 16 GB as your needs grow.

**It's also a full-featured fax** – The MC561 Color MFP has dual access functionality that lets you scan faxes into memory while the unit is busy sending or receiving faxes. It comes with a number of features found in more expensive units, such as T.37 Internet faxing, Tel/Fax auto switching, distinctive ring to differentiate between incoming fax messages and phone calls, a telephone answering device (TAD) interface, speed-dial ID display, and generous fax memory.

**Expect more support** – You can expect total support from your Authorized OKI Printing Solutions MFP provider.

If you need technical assistance, you can speak to a live expert based in North America, 24/7/365, by calling toll-free: **800.OKI.DATA** (800.654.3282).<sup>4</sup>

# Convert hard copies to digital files, manage your document workflow, and help the environment. The MC561 Color MFP lets you do it all.

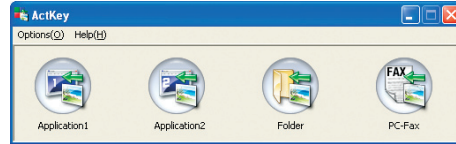
**Full functionality at your fingertips** – The user-friendly operator panel of the MC561 Color MFP features a clear, organized array of navigation buttons, a backlit LCD display, alphanumeric keypad, 1-touch fax dialing keys, and a full QWERTY keyboard. The MC561 also comes with this productivity-enhancing software:

**PaperPort® software from Nuance®** easily turns piles of paper and photos into PDF and JPEG files—using the MFP’s scanner—and saves them to your computer for future use.

**OmniPage® from Nuance**—optical character recognition (OCR) software—quickly turns hard-copy office documents and forms into electronic files for easy editing, searching and sharing.

**Desktop Capture Solution**—works through PaperPort’s Active Directory Authentication to move scanned documents into your SharePoint® or DocuWare® workflow, quickly and easily.<sup>5</sup>

**Document management made simple** – The MC561 Color MFP includes ActKey software that lets you move between scan-to tasks—including Scan-to-Folder, Scan-to-Application and Scan-to-PC Fax—with a single click.



**Environmentally friendly features** – The MC561 Color MFP also helps you control your effect on the planet’s health by providing:

**Automatic ECO Mode** When you’re only printing a few pages, the MC561 Color MFP’s response is to enter this energy-saving, performance-enhancing setting. Same terrific output, lower power consumption. Everybody wins.

**Deep Sleep Mode** The MC561 Color MFP takes power-saving even more seriously when left on for an extended period: it slips into a “deep sleep” that expends just over a single watt to maintain.

**Mono Resource-Print Mode** Even when the color toner runs out, you can still print needed documents in crisp, clear black & white. Simply cancel the original job and select this energy-efficient mode in the printer driver.

**One-piece image drum** This long-lasting, user-replaceable consumable remains friendly to your budget while lowering the number of items to dispose of and store.

**ENERGY STAR® compliance** With its lower power consumption—especially in Deep Sleep Mode—and standard duplexing, the MC561 Color MFP meets the government’s standards for energy efficiency.

## The MC561 Color MFP at a glance



**Easy-to-read and -use operator panel:** ergonomically designed to meet the needs of your workflow environment—keeping tasks simple and end users more productive. Backlit LCD display tilts up to enhance user productivity.



**Full QWERTY keyboard** (behind lift-open 1-Touch key panel): enables easy entry of email addresses and messages.

**Dual access:** scan faxes into memory while the unit is busy sending or receiving faxes

**Flatbed scanner:** handles up to 8.5" x 11" documents on the glass and up to 8.5" x 14" via the Reversing Auto Document Feeder (RADF)

**Backlit LCD display:** 3.5-inch screen tilts up as much as 90° to further simplify navigation

**Multi-tasking:** performs two tasks at the same time

**High Definition Color:** printing technology that ensures breathtaking output, even on plain paper

**100-sheet multi-purpose tray:** also handles 3" x 5" cards, envelopes and banner sheets up to 8.5" x 52"

**250-sheet paper tray:** fewer user interventions means greater productivity

**Optional 530-sheet 2nd paper tray:** increases max paper capacity to 880 sheets



**50-sheet RADF:** scans both sides of a sheet; increases user productivity

**Alphanumeric keypad:** easily enter fax numbers, codes and quantities

**1-Touch dialing:** pre-program up to 16 fax locations (panel lifts to reveal QWERTY keyboard)

**Scan to/Print from USB memory stick:** convenient front port makes these operations quick and easy

**Single Pass Color™ technology:** straight-through paper path allows for superior flexibility in paper handling

**Compact, space-saving design:** the small footprint of the MC561 MFP allows it to fit into most work spaces

<sup>1</sup> Published performance results based on laboratory testing on simplex sheet (1 side). Individual results may vary.

<sup>2</sup> Based on ITU-T Test Chart #1.

<sup>3</sup> Larger files may require additional memory.

<sup>4</sup> Available in the U.S. and Canada only.

<sup>5</sup> Requires optional connectors.

# MC561 Color MFP

## Specifications

### Printer

- **Print Speed:** Up to 27 ppm color, 31 ppm black & white<sup>1</sup>
- **Time to First Page:** As fast as 8 seconds in color, 7.5 seconds in black & white<sup>1</sup>
- **HD Color Printing Technology:** Combines multilevel LED printheads and microfine toner for sharp detail and rich color depth
- **Print Resolution:** Up to 1200 x 600 dpi
- **Processor Speed:** 533 MHz
- **Duty Cycle:** Up to 60,000 prints/copies per month
- **Duplex (2-Sided) Printing:** Standard
- **Print from USB Memory Stick:** Via front USB port
- **Connectivity:** USB v2.0 high-speed; 10/100 Base-TX Ethernet (network)
- **Emulations:** PCL<sup>®</sup> 5c, PCL 6; PostScript<sup>®</sup> 3™ emulation; SIDM
- **Operating Systems:** 32-/64-bit – Windows<sup>®</sup> 7, Vista<sup>®</sup>, XP, Server 2008 and Server 2003; 64-bit – Server 2008 R2; Win 2000; Mac Support – OS 10.3.9 to 10.6
- **Fonts:** Scalable – 86 PCL, 80 PostScript; Bitmap – OCR-A, OCR-B, Line Printer, USPS; Barcode – 12 types + PDF417

### Copier

- **Copy Speed:** Up to 27 cpm color, 31 cpm black & white<sup>1</sup>
- **First Copy Out:** As fast as 14 seconds in color, 12 seconds in black & white<sup>1</sup>
- **Duplex (2-Sided) Copying:** Standard
- **Copy Resolution:** Up to 600 x 600 dpi
- **Copy Scaling:** 25% to 400% in 1% increments; 11 pre-set scaling sizes
- **Copy Quantity Selection:** 1-99
- **ID Card Copy:** Print both sides of ID on one side of sheet

### Scanner

- **Scan Type:** Color and black & white flatbed
- **Scan Resolution:** Up to 1200 x 1200 dpi
- **Scan Speed:** Approx. 3 sec./page color, approx 2 sec./page black & white at 300 dpi (simplex)
- **Scan-to-PC:** Create electronic file from hard copy original in PDF, TIFF or JPEG file formats (TWAIN scanning driver included; Windows compatible)
- **Address Book Management:** LDAP (Lightweight Directory Access Protocol)
- **Scan-to Functionality:** Scan to e-mail with LDAP support; to USB memory stick; to FTP sites; to network; and to PC
- **Formats Supported:** PDF, TIFF, JPEG, BMP, PCX, GIF, TGA, PNG, WMF, EMF
- **TWAIN Driver:** Windows 2000 and higher; enables remote preview and scan functionality via network
- **Networking Utilities:** MFP Network Tools – access features and settings of the MFP; set up Scan-to-FTP and Scan-to-Email; apply scanning restrictions; configure and manage multiple Scan-to-FTP profiles

### Fax

- **Fax Modem:** 33.6 Kbps Super G3
- **Transmission Speed:** 3 seconds/page<sup>2</sup>
- **Fax Resolution:** Up to 200 x 400 dpi
- **1-Touch Dials:** 16 locations
- **Speed Dials:** 100 locations
- **Broadcast Transmissions:** Up to 100 locations
- **Fax Memory:** 200 pages<sup>2</sup> (4 MB)
- **Fax Functions:** Dual access (perform additional functions while sending/receiving), T.37 Internet fax, Tel/Fax auto switching, Telephone answering device (TAD) interface, Distinctive ring, Broadcasting, Manual transmission, Delayed transmission, Auto redial, Auto receive, Activity reports, Protocol report (for troubleshooting)

### Multi-Tasking

- **Operation:** Set up or perform two tasks at the same time

### Operator Panel

- **Features:** 5-line, 3.5" tilting (up to 90°) backlit LCD display; Alphanumeric keypad; Ergonomically designed function keys; 1-touch fax dials (16); full QWERTY keyboard

### Document Management

- **Utility Suite:** Nuance<sup>®</sup> PaperPort<sup>®</sup> SE v. 11, OmniPage<sup>®</sup> SE v. 16, OKI LPR, Color Correct, Swatch Utility, ActKey Utility, Network Card Setup Tool, MFP Configuration Tool, TWAIN Driver, Fax Driver, Printer Driver, Job Accounting, PrintSuperVision, Color Access Policy Manager, Desktop Document Capture

### System Memory

- **Standard/Max Imaging RAM:** 256 MB/768 MB
- **SD Card Storage:** 4 GB standard; 16 GB optional

### Paper Handling

- **Scanner RADF:** Up to 50 letter/legal sheets
- **Paper Sizes (Min./Max.):** Main Tray from 4.1" x 5.8" to 8.5" x 14"; optional 2nd Tray from 5.8" x 8.3" to 8.5" x 14"; Multi-Purpose Tray (MPT) from 3" x 5" cards to 8.5" x 52" banners
- **Standard Input:** 350 sheets (250 sheets via Main Tray + 100 sheets via MPT)
- **Maximum Input:** 880 sheets (with optional 530-sheet 2nd Paper Tray)
- **Output Capacity:** 150 sheets, face down
- **Paper Types:** Letter, Legal 13/13.5/14, Banner, Executive, A4, A5, A6, B5; Envelopes – C5, DL, Monarch, COM 9, COM 10
- **Paper Weight:** Main Tray/Opt. 2nd Tray 17 lb. bond – 65 lb. cover (64–176 gsm); RADF 16 lb. – 28 lb. bond (60–105 gsm); MPT 17 lb. bond – 80 lb. cover (64–220 gsm)

### Environmental

- **Size (WxDxH):** 16.8" x 20" x 17.5" (42.7 cm x 50.9 cm x 44.4 cm)
- **Weight:** 63 lb. (29 kg), including consumables
- **Power Consumption:** Operating Normal 570W; Max 1170W; Idle 100W; Power Save 20W; Deep Sleep <1.5W
- **Acoustic Noise:** Printing 54 dB; Copying 55.5 dB; Standby 37.0 dB; Power Save – Inaudible
- **ENERGY STAR<sup>®</sup> Compliant:** Yes

### Warranty

- **System:** 1-Year limited warranty with Overnight Exchange<sup>3</sup>
- **Digital LED Printheads:** 5-Year limited warranty

<sup>1</sup> Published performance results based on laboratory testing of simplex sheet (1 side). Individual results may vary.

<sup>2</sup> Based on ITU-T Test Chart #1.

<sup>3</sup> Available in the U.S. and Canada only.

<sup>4</sup> Based on ISO 19798. Units ship with full set of 2,000-page toner cartridges (CMYK).

<sup>5</sup> Estimated life, based on 3 pages per job.

Specifications are subject to change without notice.

©2010 OKI Data Americas, Inc. OKI Reg. T.M., M.D., OKI Electric Industry Co., Ltd. Single Pass Color T.M. and design Reg. T.M., High Definition Color logo T.M., OKI Data Corp. SynFlex T.M., OKI Data Americas, Inc. PCL Reg. T.M., Hewlett Packard Co. PostScript Reg. T.M., PostScript 3 T.M., Adobe Systems, Inc.



Ordering Information		
Description	Part Numbers	
MC561 Color MFP, 120V (Multilingual)	62435801	
MC561 Color MFP, 230V (Multilingual)	62435802	
Options		
530-Sheet 2nd Paper Tray	44472101	
256 MB DIMM	70061801	
512 MB DIMM	70061901	
16 GB SD Card	70061701	
Supplies		
Standard Toner Cartridges:		
Cyan Toner Cartridge	3,000 pg. <sup>4</sup>	44469703
Magenta Toner Cartridge	3,000 pg. <sup>4</sup>	44469702
Yellow Toner Cartridge	3,000 pg. <sup>4</sup>	44469701
Black Toner Cartridge	3,500 pg. <sup>4</sup>	44469801
High-Capacity Toner Cartridges:		
Cyan Toner Cartridge	5,000 pg. <sup>4</sup>	44469721
Magenta Toner Cartridge	5,000 pg. <sup>4</sup>	44469720
Yellow Toner Cartridge	5,000 pg. <sup>4</sup>	44469719
Black Toner Cartridge	5,000 pg. <sup>4</sup>	44469802
Image Drum:		
Single Image Drum (CMYK)	20,000 pg. <sup>5</sup>	44494201
OKIcare <sup>®</sup> Overnight Exchange Warranties <sup>3</sup>		
	U.S.	Canada
MC561 MFP 2-Year Warranty	38021402	38021412
MC561 MFP 3-Year Warranty	38021403	38021413
MC561 MFP Upgrade/On-Site	38021501	38021511
OKIcare On-Site Warranties <sup>3</sup>		
MC561 MFP 2-Year On-Site	38021502	38021512
MC561 MFP 3-Year On-Site	38021503	38021513
Print Media		
		Sheets Per Box
Bright White Proofing Sheets: 8.5" x 11" (32 lb.)	500	52206101
SynFlex <sup>™</sup> Paper (8.5" x 11" – Waterproof and Tear-resistant)	100	52205901
Premium Envelopes (size #10):	100	52206301
	500	52206302
Banner Paper (8.5" x 35.4")	100	52206002

For more information on the MC561 MFP Color Multifunction Product and supplies—including OKIcare<sup>®</sup> warranty extensions—please call, toll free, **1.800.OKI.DATA** (800.654.3282)<sup>3</sup> or visit our website: [www.okiprintingsolutions.com/us](http://www.okiprintingsolutions.com/us)

Windows, Vista Reg. T.M., Microsoft Corp. Mac Reg. T.M., Apple, Inc. Nuance, PaperPort, OmniPage Reg. T.M., Nuance Communications, Inc. USB-IF T.M., Universal Serial Bus Implementers Forum, Inc. ENERGY STAR Reg. T.M., U.S. EPA.

## OKI DATA AMERICAS, INC.

**USA**  
2000 BISHOPS GATE BLVD.  
MOUNT LAUREL, NJ 08054-4620  
TEL: 800.OKI.DATA (800.654.3282)  
FAX: 856.222.5320

**CANADA**  
4140B SLADEVIEW CRESCENT  
UNITS 7 & 8  
MISSISSAUGA, ONTARIO L5L 6A1  
TEL: 905.608.5000  
FAX: 905.608.5040

**LATIN AMÉRICA**  
2000 BISHOPS GATE BLVD.  
MOUNT LAUREL, NJ 08054-4620  
TEL: 856.231.0002  
FAX: 856.222.5071

**OKI DATA DE MÉXICO, S.A. DE C.V.**  
MARIANO ESCOBEDO, 748 8<sup>º</sup> PISO  
COL. NUEVA ANZURES C.P. 11590  
MÉXICO, D.F.  
TEL: 55.5263.8780  
FAX: 55.5250.3501

**OKI DATA DO BRASIL INFORMÁTICA LTDA.**  
AV. ALFREDO EGÍDIO DE SOUZA ARANHA, 100  
BLOCO C – 4<sup>º</sup> ANDAR  
04726-170 – SÃO PAULO – SP – BRASIL  
TEL: 11.3444.3500  
FAX: 11.3444.3502

[WWW.OKIPRINTINGSOLUTIONS.COM](http://WWW.OKIPRINTINGSOLUTIONS.COM)