

# MB451w MFP

# OKI®



**Fast, full-featured, environmentally friendly  
black & white MFP with wireless connectivity**



## OKI and The Environment

- LED Technology** Long printhead life, high efficiency
- ENERGY STAR® Compliant** Superior energy efficiency
- 2-Sided Printing/Copying** Saves energy and resources
- Deep Sleep Mode** Lowers power to save energy (<3W)
- Auto Power Off** Saves power during periods of non-use
- Separate Toner and Drum** Less disposable material



# With the MB451w MFP, you get all the functionality, reliability and productivity features you want – including Wi-Fi™ connectivity.

## Highlights:

- Professional, affordable solutions— print, copy, scan and fax
- Versatile and reliable
- Compact design, ideal for small office or small workgroup
- Fast black & white printing and copying at up to 30 ppm/cpm<sup>1</sup>
- Wi-Fi CERTIFIED™ wireless connectivity standard
- Ethernet and USB connectivity standard (including walk-up USB slot)
- Duplex (2-sided) printing/copying standard
- Multi-tasking functionality standard, enabling two tasks to be performed at once<sup>2</sup>
- Color scanning with send-to functionality
- Document management through Nuance® PaperPort®, OCR with Nuance OmniPage®
- Operator panel with backlit 3.5" LCD display, 1-touch function buttons, alphanumeric keypad
- 50-sheet reversing duplex automatic document feeder (RADF – scans both sides)
- ENERGY STAR® compliant
- 1-Year On-Site limited warranty<sup>3</sup>
- Live, toll-free technical support 24/7/365<sup>3</sup>



The MB451w MFP features a flatbed scanner, as well as a 50-sheet reversing duplex automatic document feeder (RADF).

## Everything the small workgroup requires –

The MB451w MFP from OKI combines black & white printing and copying, color/mono scanning with scan-to capabilities, and analog faxing—plus Wi-Fi CERTIFIED™ wireless connectivity.

This affordable, compact MFP lets you produce professional-looking documents with productivity-boosting speeds and budget-enhancing efficiency. It delivers up to 30 prints or copies per minute, with the first page printing as fast as 5 seconds, and the first copy as fast as 11 seconds.<sup>1</sup>

To help control costs, the MB451w MFP comes with duplex (2-sided) printing/copying standard, so you can save paper and energy. And, for ongoing savings, the 2-piece consumables configuration lets you replace just a toner cartridge when you need to, instead of the toner cartridge *and* the image drum.

**Sharing files and documents is a snap** – Place your document on the flatbed platen or in the 50-sheet reversing duplex automatic document feeder (RADF) and scan it in color or black & white. Save and send the electronic version to a folder on your PC, the network or FTP site, as an attachment to an e-mail address, or as a fax.

The MB451w offers robust fax features, including Internet (T.37) faxing, one-touch dialing, distinctive ring and broadcast faxing.

**Printing wirelessly and on the go** – The MB451w is compatible with mobile printing applications through its network connectivity—and it's also Wi-Fi CERTIFIED™ /b/g/n standard. With its Wi-Fi Protected Setup™ (WPS™), the MB451w can be easily and securely installed on a wireless network either by Push Button or PIN WPS modes.

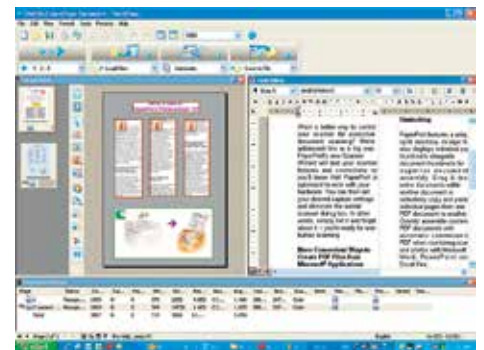
**Further enhance your productivity** – With standard multi-tasking functionality, the MB451w MFP enables you to perform several simultaneous tasks, such as scanning a document while the unit is printing, or printing a document during fax communications...<sup>2</sup>

**Document management made easy** – Among the utilities that come standard with the MB451w MFP are PaperPort® and OmniPage® by Nuance®. PaperPort is the industry-leading, award-winning software that will enable you to easily organize your scanned files, further enhancing your productivity. With its intuitive, thumbnail-based interface, PaperPort lets you save any scanned document in a PDF or JPEG format, and quickly make it available for archiving or sharing.

The feature-rich OmniPage converts scanned documents and PDF files into editable file formats used by applications such as Microsoft® Word, Excel®, Adobe® Acrobat® or HTML files.



Nuance's PaperPort is an award-winning scanning and document management application that turns paper into digital content.



OmniPage software converts paper into editable electronic documents (via OCR), saving you time and increasing your productivity.

<sup>1</sup> Published performance results based on simplex printing of letter-size sheets in laboratory testing. Individual results may vary.

<sup>2</sup> Multiple tasks are completed automatically in order, not necessarily simultaneously.

<sup>3</sup> Available in the U.S. and Canada only.

# Take control of your office security and your bottom line with this compact desktop MFP.

**Control the way your MFP is used** – The MB451w MFP allows an administrator to grant or restrict access to individuals or groups of users. Simply assign individual PIN identification codes to your personnel, according to their privileges: print, copy, scan-to-email or network folders and transmit faxes. They can unlock the restricted functions—with your permission—by entering their PIN codes into the machine’s control panel.

The MB451w MFP has a Deep Sleep mode that uses less than 3 watts of electricity during short periods of inactivity, and will even shut themselves off after a minimum of 4 hours<sup>1</sup>—so you pay less on energy costs. Your investment just keeps looking better and better.

**The MB451w MFP from OKI. Performance, flexibility and savings—all in one.**

## MB451w MFP at a Glance:



**Easy-to-read and -use operator panel:** ergonomically designed to meet the needs of your workflow environment—keeping tasks simple and end users more productive.



**Backlit LCD display:** tilts up as much as 90°.



**Multi-tasking:** performs two tasks at the same time<sup>2</sup>

**Flatbed scanner:** handles documents up to 8.5" x 11" on the glass, up to 8.5" x 14" via RADF

**Easy-to-access functionality:** primary features are simple to locate and access

**Backlit LCD display:** tilts up for easy reading; simplifies navigation to further enhance user productivity

**Fast print and copy speeds:** as fast as 30 ppm/cpm<sup>3</sup>

**100-sheet multi-purpose feeder:** also handles 3" x 5" cards, envelopes and banner sheets up to 8.5" x 52"

**Wireless connectivity:** enables printing on-the-go or from the next room over a Wi-Fi CERTIFIED™ network

**50-sheet Reversing Duplex Automatic Document Feeder (RADF):** scans both sides of a sheet; increases user productivity

**Alphanumeric keypad:** easily enter fax numbers, codes and quantities

**Scan to/Print from USB memory stick:** convenient front port makes these operations quick and easy

**Compact, space-saving design:** the small footprint of the MB451w MFP allows it to fit into most work spaces

**250-sheet paper tray:** fewer user interventions means greater productivity

<sup>1</sup> Power Save button must be pressed to awaken unit from Deep Sleep mode; Auto Power Off is user-configurable (4-hour default).  
<sup>2</sup> Multiple tasks are completed automatically in order, not necessarily simultaneously.  
<sup>3</sup> Published performance results based on simplex printing of letter-size sheets in laboratory testing. Individual results may vary.

# MB451w MFP

## Specifications

### Printer

- **Print Speed:** As fast as 30 ppm<sup>1</sup>
- **Duplex Print Speed:** As fast as 17 ppm<sup>1</sup>
- **Time to First Page:** As fast as 5 seconds<sup>1</sup>
- **Warm-up Time:** As fast as 25 seconds from Power Save mode
- **Print Resolution:** Up to 600 x 600 dpi
- **Processor Speed:** 330 MHz
- **Monthly Duty Cycle:** Up to 50,000 pages
- **Recommended:** 200–2,000 pages/month
- **Emulations:** PCL<sup>®</sup> 6, PCL 5e, IBM<sup>®</sup> PPR, EPSON<sup>®</sup> FX, PDF v1.7
- **Operating Systems:** Windows<sup>®</sup> 7 (32/64-bit), Vista<sup>®</sup> (32/64-bit), XP (32/64 bit), Server 2008 (32/64-bit), Server 2008 R2 (64-bit), Server 2003 (32/64-bit); Mac OS X 10.4.0 – 10.7.2
- **Connectivity:** 10/100 Base-TX Ethernet; USB 2.0 (Device and Host); Wireless
- **Duplex (2-Sided) Printing:** Standard

### Copier

- **Copy Speed:** As fast as 30 cpm<sup>1</sup>
- **Time to First Copy:** As fast as 11 sec.<sup>1</sup> from RADF
- **Copy Resolution:** Up to 600 x 600 dpi
- **Copy Scaling:** 25% to 400%
- **Copy Quantity Selection:** 1–99
- **Duplex (2-Sided) Copying:** Standard
- **Copy Functions:** ID Copy; Collate; n-Up; Mixed originals; Edge erase

### Scanner

- **Scan Type:** Color CIS
- **Document Input:** 50-sheet Reversing Duplex Automatic Document feeder (RADF); Single-sheet flatbed scanner
- **Scan Speed:** As fast as 1.6 sec./page Black & White; as fast as 6 sec./page Color<sup>2</sup>
- **Scan Resolution:** 600 dpi
- **Scan-to:** Folder (CIFS), E-mail (with LDAP support), FTP, TWAIN, WIA, HTTP, USB memory
- **Color Scan Depth:** Input 48-bit, Output 24-bit
- **Contrast Adjustment:** 7 levels

### Fax

- **Fax Modem:** 33.6 kbps Super G3
- **Connectivity:** RJ11 x 2 (Line/Tel), PSTN, PBX Line
- **Fax Memory:** 4 MB (approx. 200 pages<sup>3</sup>)
- **One-Touch Dials:** 16 (8 x 2 using Shift key)
- **Speed Dials:** Up to 100 locations; 20 groups
- **Broadcast Dials:** Up to 100 locations using pre-programmed numbers.

- **Fax Functions:** Fax from PC; Fax to email; Fax to fax server; Internet Fax (T.37); Transmit – from memory, manual; Auto redial; Receive – auto, to memory, manual; Dual access; Delayed transmit; Broadcast; Auto Fax/Tel switch; Distinctive ring detection; Time/Date stamp

### Address Book

- **E-mail and Fax:** LDAP, 100 E-mail addresses, 20 group addresses

### Utilities

- **Document Management:** Nuance<sup>®</sup> PaperPort<sup>®</sup> SEv11 and Nuance OmniPage<sup>®</sup> SEv16<sup>4</sup>
- **Printer/Job Management:** OKI PrintSuperVision and Job Accounting software

### Memory

- **System Memory:** Standard/Max 256 MB RAM

### Operator Panel

- **Features:** 3.5" backlit LCD display; 1-Touch function buttons; Alphanumeric keypad

### Paper Handling

- **Standard Capacity:** 250 sheets + 100-sheet Multipurpose Feeder; RADF – 50 sheets
- **Max Capacity:** 350 sheets

### Paper Sizes:

- **Multipurpose Feeder:** 3" x 5" SEF up to 8.5" x 52" banner, com-10, com-9, C5, C6, DL and Monarch envelopes; **Tray 1:** Letter, Legal 14"/13.5"/13", Statement, A4, A5, B5 (JIS); **Duplex:** Letter, Legal 14"/13.5"/13", A4, B5 (JIS); **RADF:** Letter, Legal 14"/13.5"/13", A4, A5, B5 (JIS); **Platen Glass:** Letter, A4, A5, B5 (JIS)

### Paper Weight:

- **Multipurpose Feeder:** 16 lb. bond – 43 lb. index (60–160 gsm); **Tray 1/Duplex:** 16 lb. – 32 lb. bond (60–120 gsm); **RADF:** Simplex and duplex 16 lb. – 28 lb. bond (60–105 gsm)

### Security

- **Advanced:** IP and MAC filtering; SSL/TLS, EAP (IEEE802.1X), IPSec
- **Wireless:** WPA<sup>™</sup> – Personal, WPA2<sup>™</sup> – Personal

### Environmental

- **Size (WxDxH):** 16.8" x 16.7" x 17.9" (427mm x 425mm x 455mm)
- **Weight:** Approx. 44.09 lb. (20 kg)<sup>4</sup>
- **Power Consumption:** **Idle:** 80W; **Max:** 950W; **Typical:** 580W; **Power Save:** <18W; **Sleep:** <3W; **Power Off:** <0.5W
- **ENERGY STAR<sup>®</sup> Compliance:** Yes
- **Acoustic Noise:** Operating (Printing/Scanning/Copying) 55dB(A) or less; Standby 30dB(A)

### Warranty

- **System:** 1-Year On-Site<sup>5</sup>

## Ordering Information

Description	Part Numbers	
MB451w MFP Wireless (120V)	62439001	
<b>Supplies</b>		
Toner Cartridge	1,500 pg. <sup>6</sup>	44992405
Image Drum	25,000 pg. <sup>7</sup>	44574309
<b>OKIcare<sup>®</sup> On-Site Warranty Extensions<sup>5</sup></b>		
	U.S.	Canada
2-Year On-Site Warranty	38030102	38030112
3-Year On-Site Warranty	38030103	38030113

For more information on Digital Mono MFPs and supplies from OKI—including OKIcare warranty extensions: **1.800.OKI.DATA (800.654.3282)**<sup>7</sup> or visit our website: **www.okidata.com**

Specifications are subject to change without notice. Featured products may not be available in all countries. Please contact your local office for regional availability.

<sup>1</sup> Published performance results based on laboratory testing. Individual results may vary.

<sup>2</sup> Based on ITU-T Test Chart #1.

<sup>3</sup> Windows only.

<sup>4</sup> Including all consumables.

<sup>5</sup> Available in the U.S. and Canada only.

<sup>6</sup> Estimated life, based on ISO/IEC 19752. Unit ships with 1,000-page toner cartridge.

<sup>7</sup> Estimated life, 3 pages per job (may vary depending on the number of printed pages per job).

© 2012 Oki Data Americas, Inc. OKI, OKIcare Reg. T.M., M.D., Oki Electric Industry Co., Ltd. Windows, Vista, Reg. T.M., Microsoft Corp. Mac Reg. T.M., Apple, Inc. Nuance, PaperPort, OmniPage Reg. T.M., Nuance Communications, Inc. PCL Reg. T.M., Hewlett-Packard Co. PostScript Reg. T.M., PostScript 3 T.M., Adobe Systems, Inc. IBM Reg. T.M., International Business Machines Corp. Epson Reg. T.M., Seiko Epson Corp. USB/IF Logo T.M., Universal Serial Bus Implementers Forum, Inc. Wi-Fi Alliance Reg. T.M., Wi-Fi CERTIFIED, Wi-Fi Protected Setup, WPA, WPA2 T.M., Wi-Fi Alliance. ENERGY STAR Reg. T.M., U.S. EPA.



## OKI DATA AMERICAS, INC.

### USA

2000 BISHOPS GATE BLVD.  
MOUNT LAUREL, NJ 08054-4620  
TEL: 800.OKI.DATA (800.654.3282)  
FAX: 856.222.5320

### CANADA

4140B SLADEVIEW CRESCENT  
UNITS 7 & 8  
MISSISSAUGA, ONTARIO L5L 6A1  
TEL: 905.608.5000  
FAX: 905.608.5040

WWW.OKIDATA.COM

# OKI<sup>®</sup>